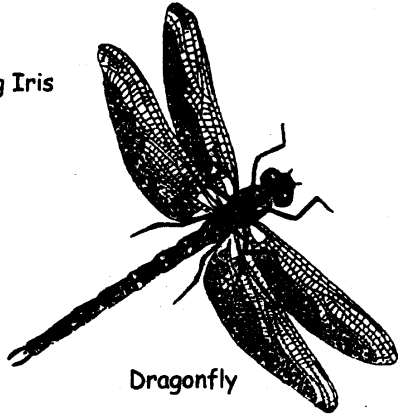


▽ There is a small man-made embankment that provides a view of an over-grown lodge. Giant Horsetail and Reedmace coat the floor, providing a haven for Frogs and Toads. Solomon's-seal can be found in this Area



Yellow Flag Iris



Dragonfly

▽ Follow the path uphill, at the top is one of the largest patches of the yellow flowered Touch-me-not Balsam. This is native to the British Isles, its name arising from the effect of touching the explosive seed capsules.

▽ Turning right follow the path until you head down hill and come out at the picnic tables beside the Big Lodge.

▽ Keep to the left and gaps in the hedge will provide views over the Top Lodge. This Local Nature Reserve has been planted up with Common Reed to provide cover for birds such as Reed Warbler, and Coot. Heron and Kingfisher hunt here and dragonfly can often be seen on the wing over the lodge. Cross over the sluice between Big Lodge and Top Lodge and turn left.

▽ Keeping right, go through a kissing gate and across the River Yarrow. The quality of the water has much improved since industry ended. It now supports plants, fish and birds.

▽ Go through the first kissing gate on the right. Bindweed, Rosebay Willowherb, Red Clover, Knapweed and Eyebright can be seen along the footpath.

▽ Go straight until you come upon a picnic area. Scabious and Yellow Loosestrife grow around the edges. Head across the area and go down hill back into the wood. Turn right around the fences of the old coal pits.

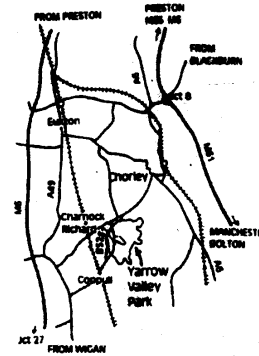
▽ At the bottom of the hill go across the bridge and back up to Big Lodge. Turn left along the wall of the lodge. Yellow Flag Iris, Hemp-agrimony and Water Mint grow along the waters edge.

▽ Coming back towards the car park Yellow Water Lilies can be seen growing in the lodge. Follow the path back to the start of the walk.

I hope you enjoyed the walk and found it interesting.

How to find us

Yarrow valley Country Park is located to the southwest of Chorley, off the B5251 road Between Chorley and Coppull.



This pamphlet has been produced by
Leisure Services Unit
Designed by Regeneration Unit

If you require further information
Contact 01257 279538
E-mail: leisure@chorley.gov.uk

Chorley
Borough Council



Yarrow Valley



Country Park

Nature Trail



Kingfisher

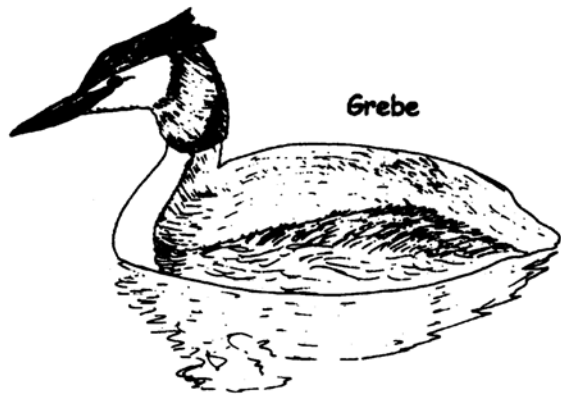
- Circular walk approx duration 1 hour
- Boots or wellies are recommended in winter
- Unsuitable for pushchairs and wheelchairs

PHAMPHLET NO 4

Follow the kingfisher waymarkers and the direction of the yellow arrows to find your way:

▽ From the car park walk up the broad stone steps to the Small Lodge. This area of open water supports a wide variety of wildlife. Damselflies are often seen during the summer months. This and the Big Lodge are stocked with fish such as pike, carp and perch which are an important resource for feeding birds.

▽ Turn right and follow the footpath through the railings and turn left. The path goes between the Big Lodge and a small pond. These two areas are important for nesting Coot, Moorhen, Mallard and Grebe.



Grebe

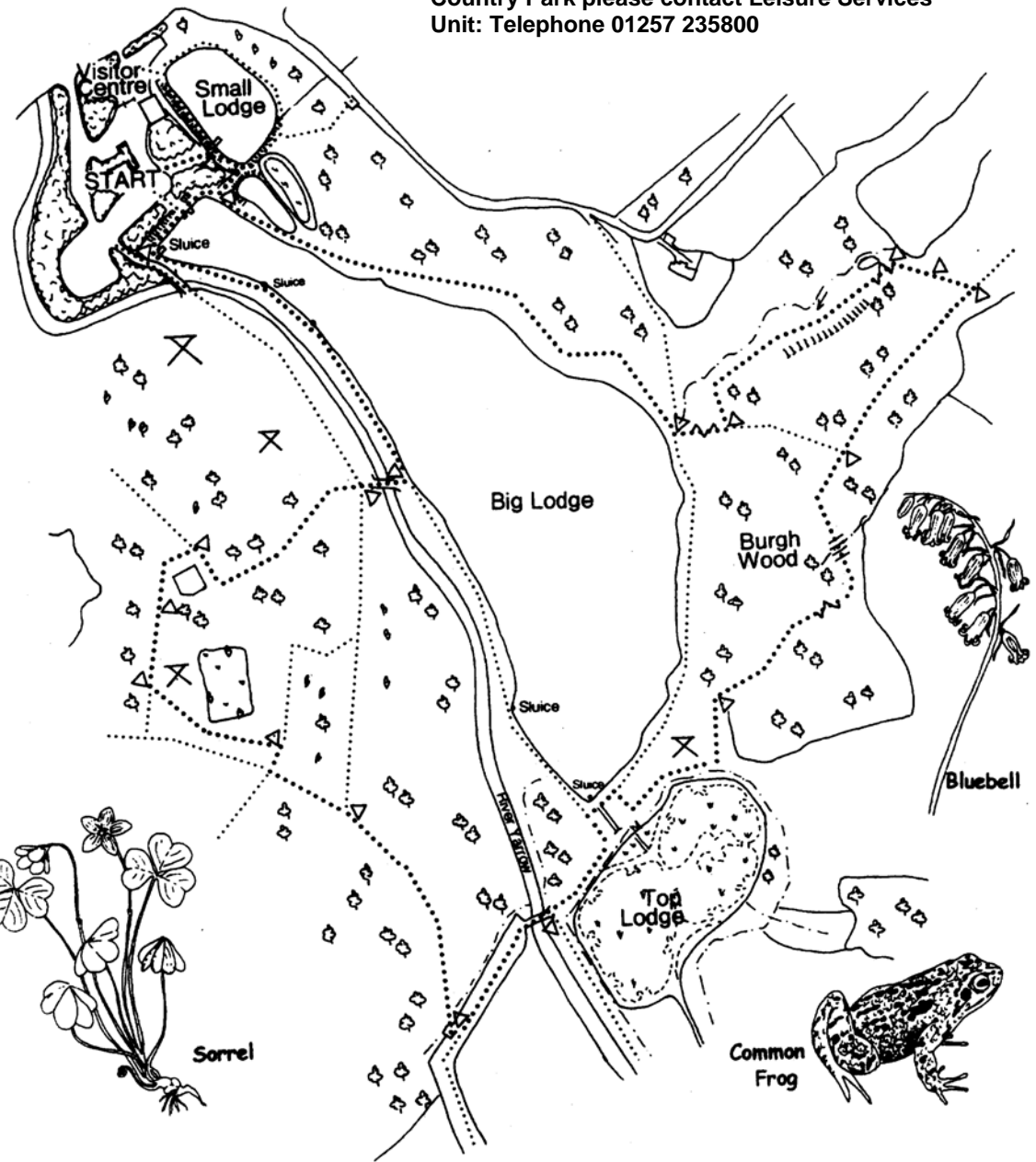
Progressing through the mixed broad leaved wood the path opens out onto the shore of the Big Lodge. Swan, Grebe and Mallard can often be seen. The best time to view waterfowl is during the winter months when visiting species are present.

▽ Following the path across a small inlet stream turn left up hill into Burgh Wood. Keep left, following the course of the stream. This area has a varied plant life: Male Fern, Sorrel, Enchanter's nightshade, Herb Robert, Red Campion and Dogs Mercury are found throughout. This is one of the least visited areas of the Country Park.



Sorrel

For further information about Yarrow Valley Country Park please contact Leisure Services Unit: Telephone 01257 235800



Bluebell

Common Frog