

# Chorley Local Plan (2012-2026)



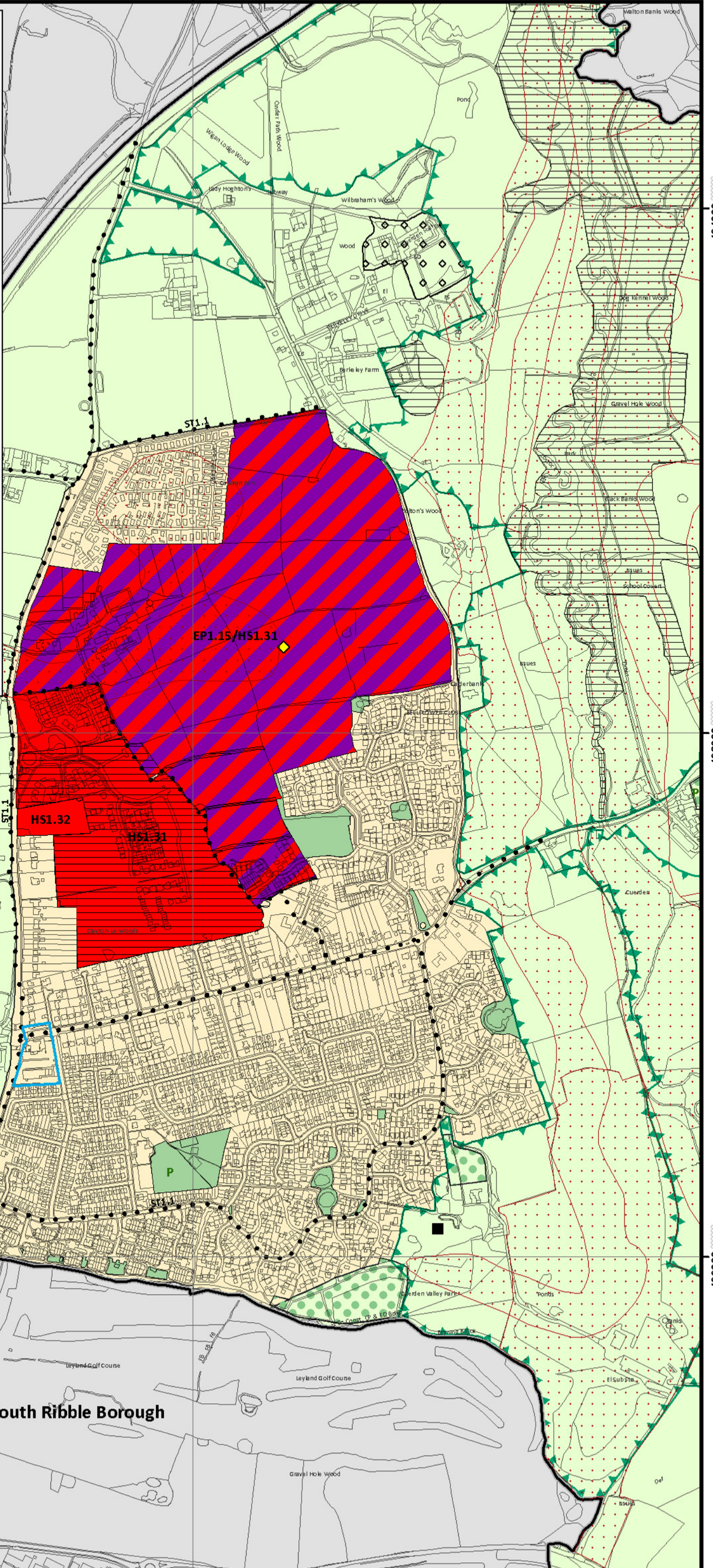
## Policies Map Adopted Edition July 2015 Clayton-le-Woods Inset - Map 7

### Key

- BNE5 - Previously Developed Sites in the Green Belt
- BNE8 - Scheduled Monuments
- EP1/HS1 - Mixed Use Allocations
- EP7 - District and Local Centres
- EP10 - Primary Schools Allocations (indicative)
- HS1 - Housing Allocations
- HW2 - Existing Open Space (Green Belt)
- HW2 - Existing Open Space
- HW2 - Existing Sport & Recreational Facilities (GB)
- HW2 - Existing Sport & Recreational Facilities
- HW3 - Valley Parks
- ST1 - New Cycle Routes
- V2 - Settlement Areas
- Biological Heritage Sites
- Chorley Borough Boundary
- Green Belt
- Mineral Safeguarding Areas
- Outside Local Plan Area

Scale 1:7,500

© Crown copyright and database rights 2015 OS 100018509



424000 000000

424000 000000

423000 000000

423000 000000

422000 000000

422000 000000

South Ribble Borough